

UK pig facts and figures – 2019



PORK

Contents

- 3 Chapter 1 – Marketing chain
- 4 Chapter 2 – Pig numbers
- 5 Chapter 3 – Slaughterings and production
- 8 Chapter 4 – Cost of production
- 9 Chapter 5 – Technical performance
- 20 Chapter 6 – Pig carcase classification
- 25 Chapter 7 – Livestock and meat prices
- 27 Chapter 8 – Imports and exports
- 33 Chapter 9 – Consumption



Chapter 1 – Marketing chain

Table 1.1 UK pig meat supply balance

'000 tonnes	2014	2015	2016*	2017	2018
Production	863	900	903	903	927
Imports	1,065	1,104	1,075	1,083	1,062
Fresh/frozen**	513	546	517	532	509
Bacon	300	294	284	258	252
Processed	252	264	274	293	302
Exports	233	237	251	263	266
Total consumption	1,694	1,767	1,727	1,722	1,722
Self-sufficiency (%)	50.9	50.9	52.3	52.4	53.8
Domestically used production as a % of consumption	37.2	37.5	37.7	37.1	38.3

* Defra changed to calendar months from February 2016. 2016 figures converted to a 52-week year

** Fresh/frozen pork imports estimated based on export data for UK's seven largest suppliers

Total consumption is a balance calculation based upon total supplies available for consumption, i.e. production + imports - exports

Self-sufficiency (%) = production/consumption (where consumption is production + imports - exports)

All data has been converted to carcase weight equivalent

Source: AHDB, Defra, IHS Maritime & Trade – Global Trade Atlas®/HMRC, Statistics Germany, Agentia Tributaria, CSO Ireland

Table 1.2 EU pig meat supply balance

'000 tonnes	2015	2016	2017	2018 (f)	2019 (f)
Net production	23,443	23,875	23,655	24,015	23,768
Imports	11	12	14	15	19
Exports	2,218	2,814	2,567	2,631	2,500
Consumption	21,236	21,073	21,102	21,399	21,287
Self-sufficiency (%)	110.5	113.3	112.2	112.3	111.7

All data is carcase weight equivalent

f = forecast

Source: EU Commission



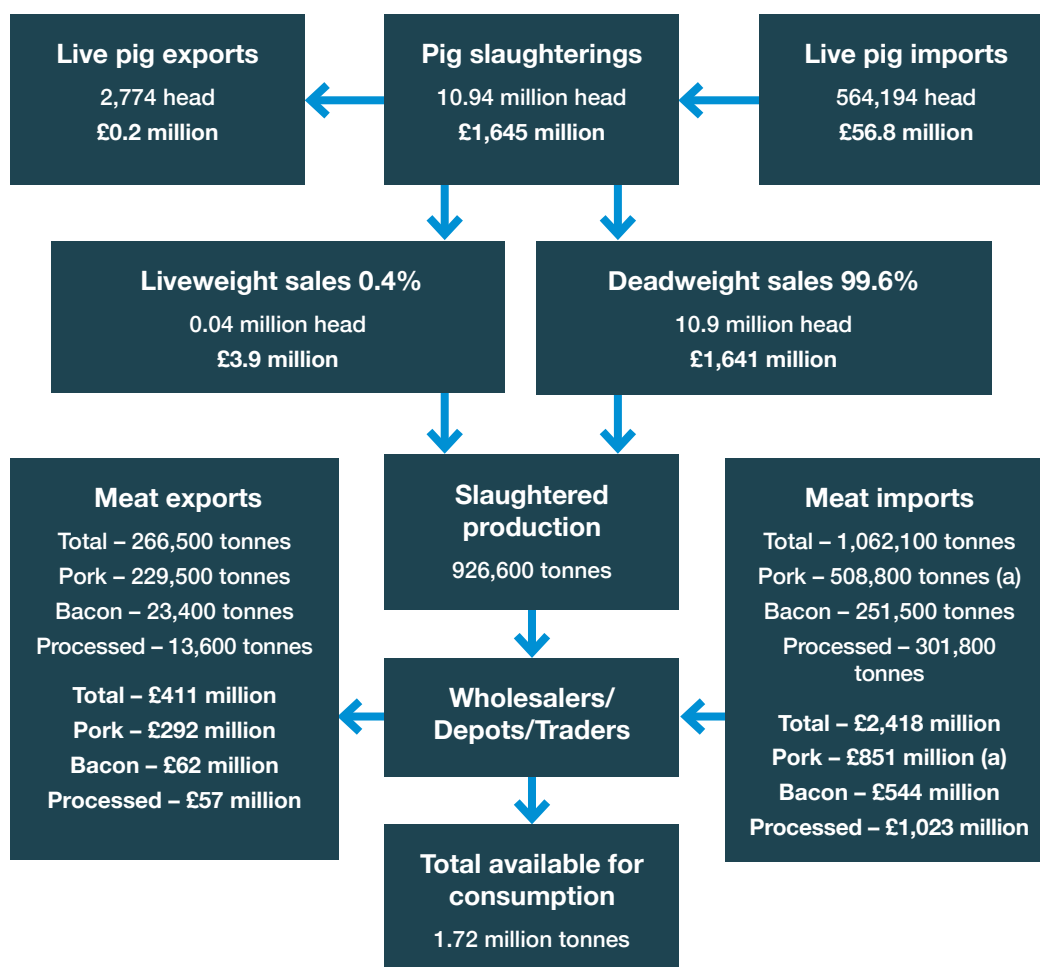


Figure 1.1 UK product flows in the pig meat marketing chain in 2018

a = includes pork imports subsequently cured in the UK. Pork imports estimated based on export data for UK's seven largest suppliers

All data has been converted to carcass weight equivalent

Source: AHDB, Defra, IHS Maritime & Trade – Global Trade Atlas®/HMRC, Statistics Germany, Agentia Tributaria, CSO Ireland

Chapter 2 – Pig numbers

Table 2.1 UK pig numbers, June survey

'000 head	2014	2015	2016	2017	2018
Sows in pig	282	285	295	297	289
Gilts in pig	57	56	55	55	58
Other sows	67	66	65	64	63
Total breeding sows	406	408	415	417	409
Gilts for breeding	80	85	79	81	81
Boars for service	14	15	15	14	13
Feeding pigs	4,315	4,232	4,356	4,457	4,509
Total pigs	4,815	4,739	4,866	4,969	5,012

Source: Defra

Table 2.2 Breeding pig numbers by region, June survey

%	2014	2015	2016	2017	2018
England	82.0	81.5	81.8	81.4	81.0
Wales	0.8	0.8	0.8	0.7	0.7
Scotland	7.2	7.5	7.1	7.3	7.3
Northern Ireland	9.8	10.3	10.4	10.7	11.0

Totals may not add up to 100% due to rounding

Source: Defra

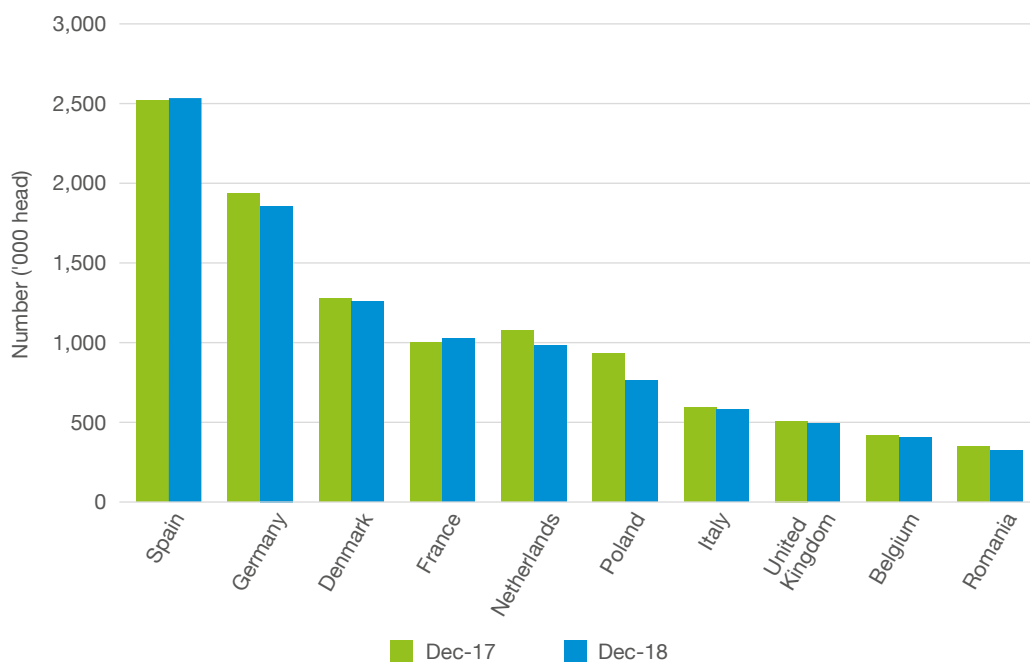


Figure 2.1 EU breeding pig numbers

Source: Eurostat

Chapter 3 – Slaughterings and production

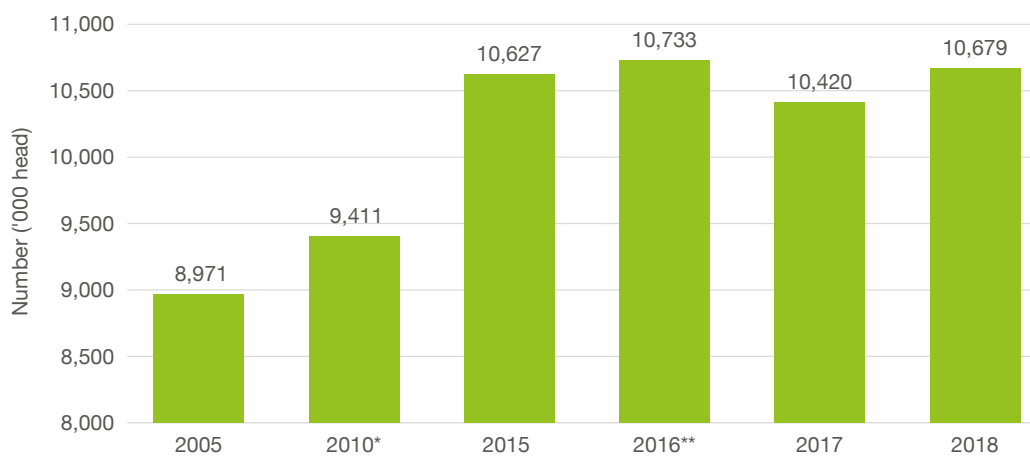


Figure 3.1 UK trends in clean pig slaughterings

* 53-week statistical year

**Defra changed to calendar months from February 2016

Source: Defra

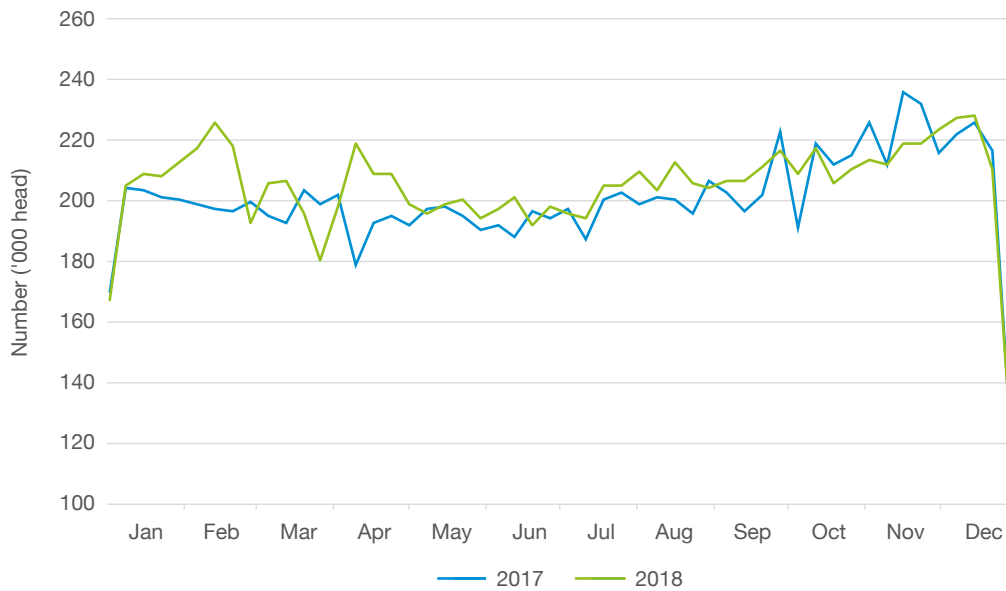


Figure 3.2 UK weekly clean pig slaughter

Source: AHDB, Defra

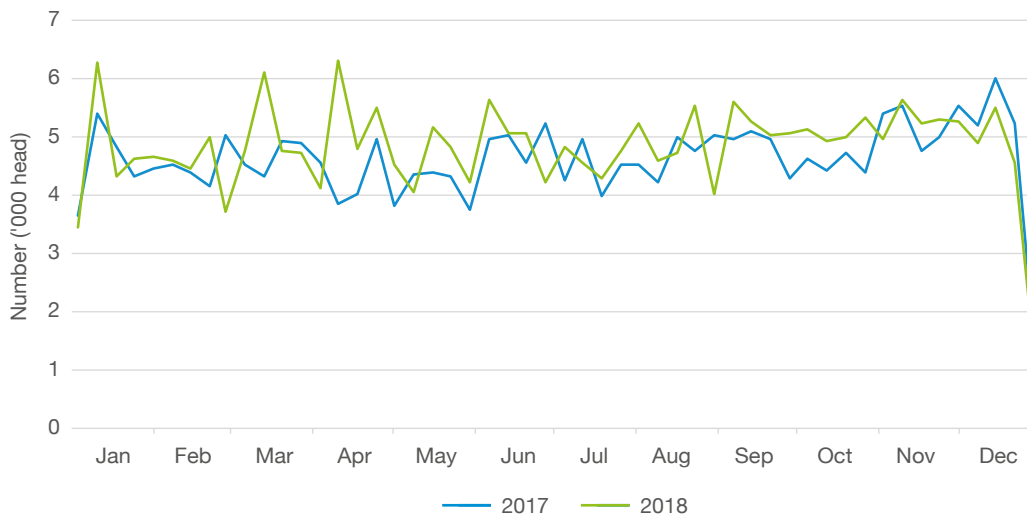


Figure 3.3 UK weekly sow culling

Source: AHDB, Defra

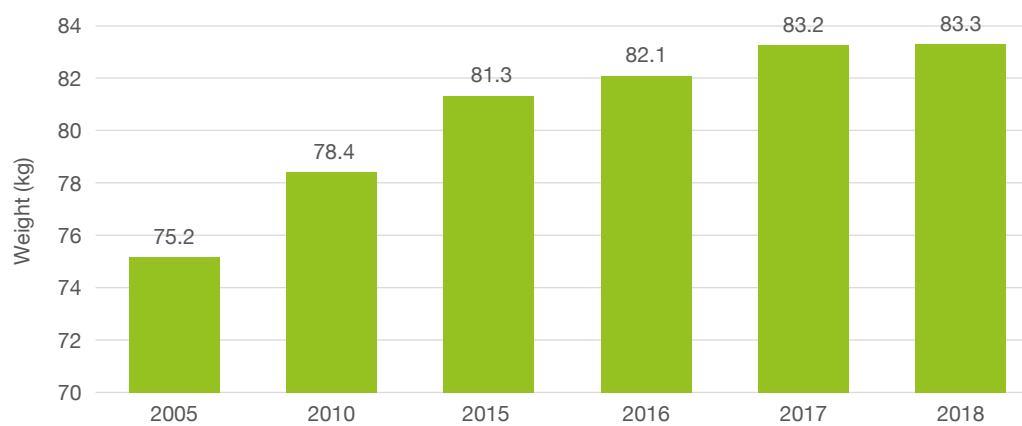


Figure 3.4 UK average clean pig carcass weights

Source: Defra

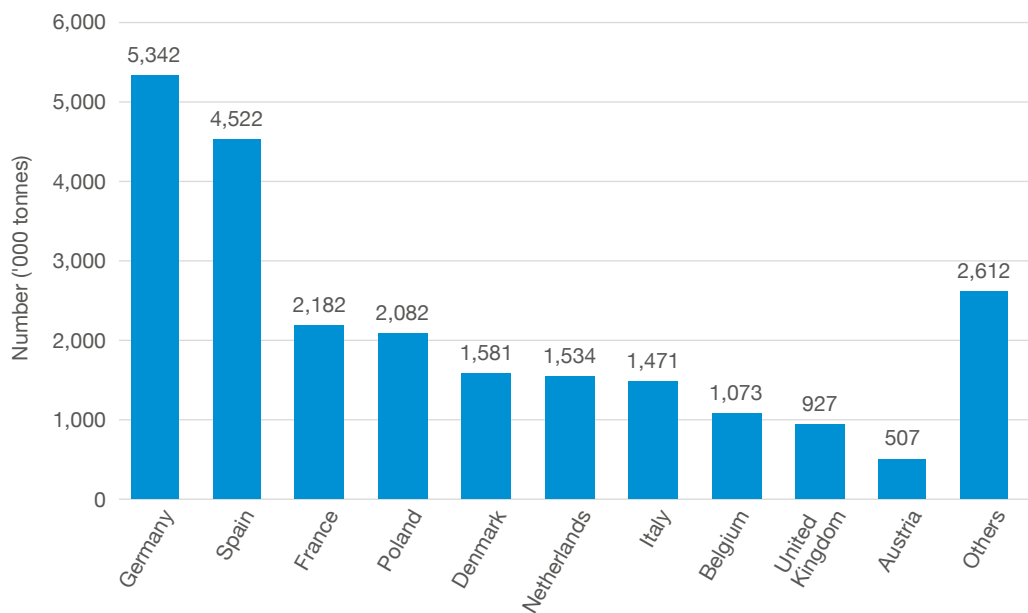


Figure 3.5 EU pig meat production, 2018

Production figures are calendar year

Source: Eurostat

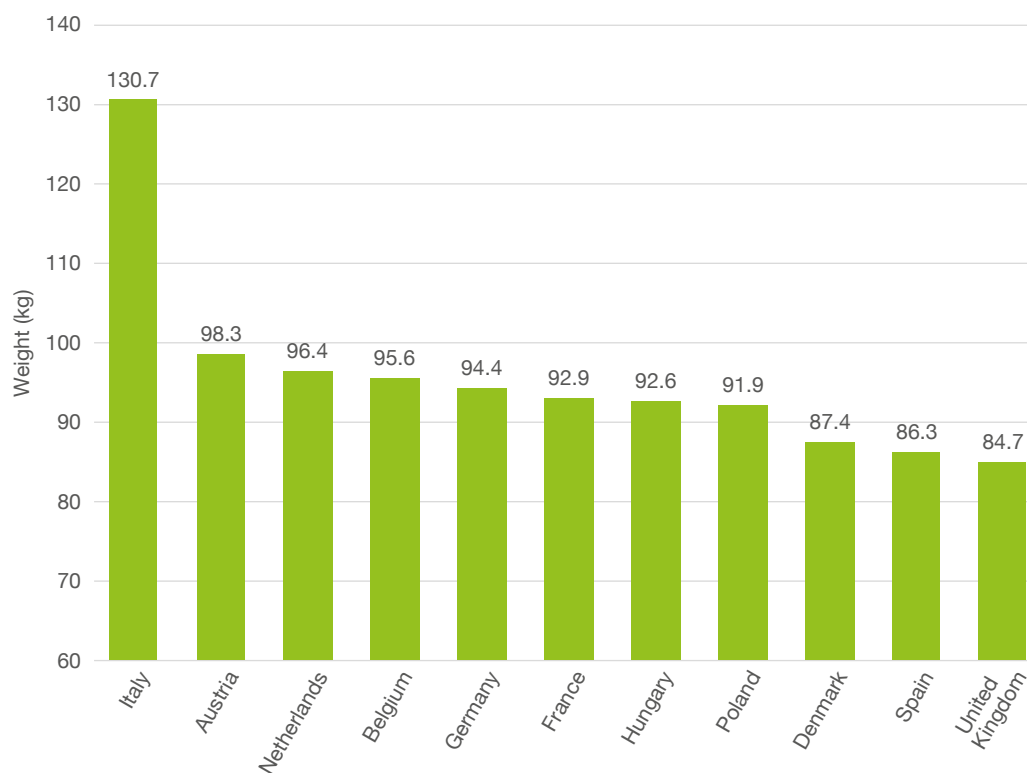


Figure 3.6 EU average pig carcass weights, 2018

Source: Eurostat

Chapter 4 – Cost of production

Table 4.1 GB change in cost of production for change in price, 2018

Feed type	Base CoP (p/kg dw)	Feed price + £5	Feed price + £10	Feed price + £15	Feed price + £20
Sow feed	155.6	155.9	156.2	156.6	156.9
Rearing feed	155.6	155.9	156.2	156.5	156.8
Finishing feed	155.6	156.8	158.0	159.3	160.5

CoP = cost of production

Table 4.2 GB change in cost of production for different levels of pigs weaned per sow per year, 2018

	Bottom third	Average	Top third
Pigs weaned per sow per year	21.7	25.4	29.5
CoP (p/kg dw)	163.9	156.0	149.6

CoP = cost of production

Table 4.3 GB change in cost of production for different levels of feed conversion ratio, 2018

	Bottom third	Average	Top third
Rearing FCR	1.93	1.70	1.45
CoP (p/kg dw)	157.9	155.6	152.9
Finishing FCR	3.17	2.79	2.45
CoP (p/kg dw)	163.8	155.6	148.3
Combined FCR	2.82	2.51	2.16
CoP (p/kg dw)	168.0	158.1	146.9

FCR = feed conversion ratio

CoP = cost of production

Table 4.4 GB change in cost of production for different levels of daily liveweight gain, 2018

	Bottom third	Average	Top third
Rearing DLWG (g/day)	368	469	595
CoP (p/kg dw)	156.6	155.6	154.8
Finishing DLWG (g/day)	631	866	984
CoP (p/kg dw)	157.8	155.6	154.8
Combined DLWG (g/day)	589	667	789
CoP (p/kg dw)	157.6	156.2	154.6

DLWG = daily liveweight gain

CoP = cost of production

Chapter 5 – Technical performance

Table 5.1 Distribution of herd size in Agrosoft recorded breeding herds

Sow size group (head)	% of herds				
	2014	2015	2016	2017	2018
100–249	13	11	9	13	9
250–499	23	26	25	24	28
500–749	29	27	25	25	24
750–999	10	13	17	15	13
1,000–1,499	20	19	19	19	19
1,500–3,000	5	4	4	5	5
>3,000	0	0	1	1	1
Total	100	100	100	100	100

Totals may not add up to 100% due to rounding

Source: Agrosoft Ltd

Table 5.2 Trends in weaning age

Age at weaning (days)	% of herds				
	2014	2015	2016	2017	2018
<19	0	0	0	0	0
20–25	37	34	28	10	28
26–32	60	63	68	85	69
33–39	3	3	4	4	3
>39	0	0	0	0	1
Total	100	100	100	100	100

Totals may not add up to 100% due to rounding

Source: Agrosoft Ltd



Table 5.3 Results for all breeding herds, 2018

	Average*	Top third*	Top 10%*
Herd structure			
Average number sows and gilts	749	659	853
Average number unserved gilts	66	72	147
Replacement rate (%)	55.6	59.5	64.7
Sow sales and deaths (%)	57.6	60.5	65.1
Sow mortality (%)	5.6	6.0	6.4
Sow performance			
Successful services (%)	83.3	87.1	89.0
Litters per sow per year**	2.2	2.3	2.4
Non-productive days per litter#	20.7	13.6	12.8
Pigs born per litter			
Alive	12.9	14.1	14.6
Dead	0.7	0.8	0.9
Mummified	0.2	0.3	0.3
Total	13.6	15.2	15.8
Pigs born alive per sow per year	28.9	33.1	34.7
Pre-weaning mortality (%)	12.1	11.0	10.5
Pigs weaned per litter	11.3	12.6	13.1
Pigs weaned per sow per year**	25.4	29.5	31.0
Average weight of weaned pig (kg)	7.2	7.1	6.8
Average weaning age (days)	26.4	26.7	25.8
Feed usage##			
Sow feed per sow per year (tonnes)	1.29	1.32	1.29
Feed per pig weaned (kg)	47.9	40.3	35.6

* Selected on the basis of pigs weaned per sow per year

** Per sow data excludes unserved gilts

Non-productive days excludes gestation, lactation and a six-day weaning to service interval

Per sow data includes unserved gilts

Source: Agrosoft Ltd



Table 5.4 Trends in performance and feed costs in the breeding herd

	2014	2015	2016	2017	2018
Herd structure					
Average number sows and gilts	714	697	740	757	749
Sow sales and deaths (%)	51.6	58.7	52.5	53.2	57.6
Sow mortality (%)	4.5	5.2	4.9	5.4	5.6
Sow performance					
Litters per sow per year*	2.3	2.3	2.3	2.3	2.2
Pigs born alive per litter	12.1	12.2	12.4	12.8	12.9
Pre-weaning mortality (%)	12.7	12.4	12.7	12.5	12.1
Pigs weaned per litter	10.5	10.7	10.8	11.2	11.3
Pigs weaned per sow per year*	23.9	24.1	24.6	25.5	25.4
Average weaning age (days)	26.3	26.4	26.6	26.6	26.4
Sow feed					
Sow feed per sow per year (tonnes)#	1.40	1.50	1.40	1.40	1.30
Sow feed cost per tonne (£)##	199.60	184.77	182.02	206.72	235.03

* Per sow data excludes unserved gilts

Per sow data includes unserved gilts

Per tonne compound feed cost from AHDB (weighted indoor, outdoor, dry and lactating)

Source: Agrosoft Ltd



Table 5.5 Breeding herd results by herd size, 2018

Number of sows	100–249	250–499	500–749	750–999	1,000–1,500	>1,500
Herd structure						
Average number sows and gilts	189	388	701	937	1,291	2,450
Average number in-pig gilts	35	69	108	129	194	365
Average number unserved gilts	16	27	49	49	120	291
Replacement rate (%)	48.0	50.9	55.6	55.3	54.4	60.9
Sow sales and deaths (%)	49.6	55.9	54.1	52.8	58.4	61.0
Sow mortality (%)	4.2	5.7	6.0	6.0	5.1	6.5
Sow performance						
Successful services (%)	81.0	84.6	83.0	83.7	82.8	84.0
Non-productive days per litter [#]	24.6	20.4	18.6	22.0	20.1	21.4
Litters per sow per year [*]	2.2	2.2	2.3	2.2	2.2	2.3
Pigs born per litter						
Alive	12.9	13.6	12.8	12.7	12.4	13.4
Dead	0.9	0.9	0.6	0.6	0.5	0.7
Mummified	0.3	0.3	0.3	0.3	0.2	0.2
Total	14.0	14.6	13.5	13.4	13.0	14.2
Pigs born alive per sow per year	28.2	30.4	28.9	28.5	27.9	30.3
Pre-weaning mortality (%)	12.7	12.5	11.2	10.5	12.9	13.0
Pigs weaned per litter	11.3	11.9	11.3	11.4	10.8	11.6
Pigs weaned per sow per year [*]	24.6	26.6	25.7	25.5	24.3	26.4
Average weight of weaned pig (kg)	8.4	7.3	7.2	7.6	7.0	7.0
Average weaning age (days)	30.4	27.6	26.9	26.7	25.7	26.4
Feed usage^{##}						
Sow feed per sow per year (tonnes)	1.51	1.31	1.46	1.19	1.27	1.18
Feed per pig weaned (kg)	73.7	43.7	52.5	40.3	57.6	35.3

* Per sow data excludes unserved gilts

Non-productive days excludes gestation, lactation and a six-day weaning-to-service interval

Per sow data includes unserved gilts

Data includes both indoor and outdoor herds

Source: Agrosoft Ltd

Table 5.6 Breeding herd results by age at weaning, 2018

Age at weaning	Less than 26 days			26 days+		
	Average	Top third	Top 10%	Average	Top third	Top 10%
Herd structure						
Average number sows and gilts	1,093	1,112	1,963	718	653	584
Average number in-pig gilts	181	189	316	108	107	99
Average number unserved gilts	110	142	407	48	48	34
Replacement rate (%)	59.4	63.2	67.0	53.4	57.0	58.6
Sow sales and deaths (%)	58.8	60.3	60.7	56.8	60.5	65.5
Sow mortality (%)	5.1	6.5	7.7	6.0	6.2	6.8
Sow performance						
Successful services (%)	82.8	85.6	88.0	83.3	86.9	89.1
Non-productive days per litter [#]	20.3	15.0	14.5	21.2	13.5	12.5
Litters per sow per year [*]	2.3	2.4	2.4	2.2	2.3	2.3
Pigs born per litter						
Alive	12.9	14.0	14.8	12.8	14.0	14.5
Dead	0.6	0.8	0.9	0.7	0.8	0.8
Mummified	0.2	0.3	0.2	0.2	0.3	0.3
Total	13.6	15.0	16.0	13.6	15.0	15.6
Pigs born per sow per year	29.2	33.2	35.1	28.7	32.5	33.9
Pre-weaning mortality (%)	12.2	11.4	11.4	12.1	10.9	10.1
Pigs weaned per litter	11.3	12.4	13.2	11.3	12.5	13.0
Pigs weaned per sow per year [*]	25.6	29.3	31.1	25.2	29.0	30.5
Average weight of weaned pig (kg)	6.7	6.5	6.4	7.4	7.2	7.3
Average weaning age (days)	24.4	24.1	24.6	27.5	27.8	28.3
Feed usage ^{##}						
Sow feed per sow per year (tonnes)	1.10	1.00	1.20	1.30	1.30	1.30
Feed per pig weaned (kg)	40.4	34.0	28.6	51.6	45.3	43.1

* Per sow data excludes unserved gilts

Non-productive days excludes gestation, lactation and a six-day weaning-to-service interval

Per sow data includes unserved gilts

Data includes both indoor and outdoor herds

Source: Agrosoft Ltd

Table 5.7 Comparison of results for outdoor and indoor breeding herds, 2018

	Outdoor herds	Indoor herds
Herd structure		
Average number sows and gilts	985	719
Average number in-pig gilts	131	127
Average number unserved gilts	85	59
Replacement rate (%)	53.5	57.0
Sow sales and deaths (%)	53.4	60.9
Sow mortality (%)	5.0	6.1
Sow performance		
Successful services (%)	82.4	84.0
Non-productive days per litter [#]	22.6	19.1
Litters per sow per year [*]	2.2	2.3
Pigs born per litter		
Alive	12.1	13.6
Dead	0.5	0.8
Mummified	0.2	0.2
Total	12.6	14.6
Pigs born per sow per year	26.7	31.0
Pre-weaning mortality (%)	12.7	11.6
Pigs weaned per litter	10.5	12.0
Pigs weaned per sow per year [*]	23.3	27.4
Average weight of weaned pig (kg)	7.5	7.1
Average weaning age (days)	26.5	26.3
Feed usage^{##}		
Sow feed per sow per year (tonnes)	1.39	1.28
Feed per pig weaned (kg)	57.2	40.9
Feed costs^{###}		
Sow feed cost per tonne (£)	233.39	236.12

* Per sow data excludes unserved gilts

Non-productive days excludes gestation, lactation and a six-day weaning-to-service interval

Per sow data includes unserved gilts

Per tonne compound feed cost from AHDB (weighted dry and lactating)

Source: Agrosoft Ltd

Table 5.8 Comparative results for indoor breeding herds

	2014	2015	2016	2017	2017	2018	2018
Herd structure					Top third*		Top third*
Average number sows and gilts	598	592	703	661	770	719	865
Average number unserved gilts	36	28	62	60	89	59	94
Sow replacements (%)	52.9	52.4	53.6	54.8	61.0	57.0	62.0
Sow sales and deaths (%)	54.0	62.3	57.2	55.6	59.1	60.9	62.9
Sow mortality (%)	5.2	6.2	6.0	6.3	6.6	6.1	5.6
Sow performance							
Non-productive days per litter [#]	16.9	17.4	17.3	16.9	12.0	19.1	13.2
Litters per sow per year ^{**}	2.3	2.3	2.3	2.3	2.4	2.3	2.4
Pigs born per litter							
Alive	12.6	12.8	13.0	13.3	14.1	13.6	14.3
Dead ^{***}	0.7	0.7	0.8	0.8	0.8	0.8	0.8
Total	13.5	13.7	13.9	14.3	15.0	14.6	15.4
Pre-weaning mortality (%)	11.5	11.5	11.8	12.0	11.1	11.6	10.6
Pigs weaned per litter	11.2	11.3	11.5	11.7	12.5	12.0	12.8
Pigs weaned per sow per year ^{**}	25.7	26.0	26.2	26.8	29.6	27.4	30.1
Average weight of weaned pig (kg)	7.1	7.2	7.3	7.2	7.1	7.1	6.9
Average weaning age (days)	26.6	26.4	26.7	26.7	26.5	26.3	26.5
Feed usage ^{##}							
Sow feed per sow per year (tonnes)	1.35	1.35	1.27	1.30	1.29	1.28	1.32
Feed per pig weaned (kg)	47.3	51.2	48.3	42.3	41.8	40.9	37.7
Feed costs ^{###}							
Sow feed cost per tonne (£)	201.94	186.15	183.38	207.78	n/a	236.12	n/a

* Selected on basis of pigs weaned per sow per year

** Per sow data excludes unserved gilts

*** Includes mummified pigs born

Non-productive days excludes gestation, lactation and a six-day weaning-to-service interval

Per sow data includes unserved gilts

Per tonne compound feed cost from AHDB (weighted dry and lactating)

n/a = not applicable

Source: Agrosoft Ltd

Table 5.9 Comparative results for outdoor breeding herds

	2014	2015	2016	2017	2017	2018	2018
Herd structure					Top third*		Top third*
Average number sows and gilts	928	867	959	912	860	985	796
Average number unserved gilts	55	30	91	99	87	85	42
Sow replacements (%)	51.0	48.9	50.0	47.7	51.8	53.5	55.4
Sow sales and deaths (%)	48.5	54.7	48.6	50.3	52.4	53.4	52.9
Sow mortality (%)	3.8	4.2	3.8	4.3	5.1	5.0	6.0
Sow performance							
Non-productive days per litter#	21.5	23.0	19.7	18.5	13.5	22.6	14.1
Litters per sow per year**	2.2	2.2	2.3	2.3	2.4	2.2	2.3
Pigs born per litter							
Alive	11.4	11.5	11.7	12.1	12.7	12.1	12.6
Dead***	0.5	0.4	0.5	0.4	0.6	0.5	0.5
Total	11.9	11.9	12.1	12.5	13.3	12.6	13.1
Pre-weaning mortality (%)	14.2	13.4	13.8	13.1	12.2	12.7	10.9
Pigs weaned per litter	9.8	9.9	10.1	10.5	11.2	10.5	11.2
Pigs weaned per sow per year**	21.8	22.1	22.8	24.0	26.3	23.3	26.2
Average weight of weaned pig (kg)	7.0	6.9	7.3	7.3	7.6	7.5	7.7
Average weaning age (days)	26.1	26.4	26.5	26.3	25.7	26.5	26.1
Feed usage##							
Sow feed per sow per year (tonnes)	1.5	1.7	1.6	1.5	1.6	1.4	1.4
Feed per pig weaned (kg)	72.5	75.5	67.9	58.7	57.7	57.2	50.2
Feed costs###							
Sow feed cost per tonne (£)	196.10	182.72	179.98	205.12	n/a	233.39	n/a

* Selected on basis of pigs weaned per sow per year

** Per sow data excludes unserved gilts

*** Includes mummified pigs born

Non-productive days excludes gestation, lactation and a six-day weaning-to-service interval

Per sow data includes unserved gilts

Per tonne compound feed cost from AHDB (weighted dry and lactating)

n/a = not applicable

Source: Agrosoft Ltd

Table 5.10 Overall rearing herd results, 2018

	Average	Top third*	Top 10%*
Herd structure			
Average number of pigs	2,490	2,147	2,831
Pig performance			
Average weight of pigs at start (kg)	7.3	7.1	6.9
Average weight of pigs produced (kg)	36.2	32.2	29.3
Rearing mortality (%)	4.1	3.6	3.9
Feed conversion ratio	1.7	1.5	1.3
Daily gain (g)	469	466	443
Days in herd	77	69	67

* Selected on feed conversion ratio

Source: Agrosoft Ltd

Table 5.11 Trends in performance and feed costs in the rearing herd

	2014	2015	2016	2017	2018
Herd structure					
Average number of pigs	2,523	2,983	2,195	2,406	2,490
Pig performance					
Average weight of pigs at start (kg)	7.5	7.6	7.5	7.4	7.3
Average weight of pigs produced (kg)	37.1	36.9	36.8	37.5	36.2
Rearing mortality (%)	2.8	2.8	3.6	3.8	4.1
Feed conversion ratio	1.7	1.9	1.7	1.8	1.7
Daily gain (g)	502	463	484	516	469
Feed usage and costs*					
Feed cost per tonne (£)	282.15	252.56	249.25	273.01	289.36

* Per tonne compound feed cost from AHDB

Source: Agrosoft Ltd



Table 5.12 Overall herd results ranked on daily liveweight gain, 2018

	Rearing			Feeding			Combined rearing/feeding*		
	Average	Top third*	Top 10%	Average	Top third*	Top 10%	Average	Top third*	Top 10%
Herd structure									
Average number of pigs	2,490	2,147	2,831	1,757	1,658	1,703	3,559	3,409	3,823
Pig performance									
Average weight of pigs at start (kg)	7.3	7.1	6.9	38.4	35.3	36.0	7.6	7.6	7.5
Average weight of pigs produced (kg)	36.2	32.2	29.3	109.6	110.7	109.4	109.6	110.1	108.6
Mortality (%)	4.1	3.6	3.9	3.2	2.7	2.9	5.9	5.8	5.2
Feed conversion ratio	1.70	1.45	1.31	2.79	2.45	2.31	2.51	2.16	2.00
Daily gain (g)	469	466	443	866	916	874	667	734	722
Days in herd	77	69	67	130	123	127	157	150	151

* Rearing; Feeding; and Combined rearing and feeding do not necessarily directly correspond

Source: Agrosoft Ltd

Table 5.13 Overall finishing herd results, 2018

	Average	Top third*	Top 10%*
Herd structure			
Average number of pigs	3,559	3,409	3,823
Pig performance			
Average weight of pigs at start (kg)	7.6	7.6	7.5
Average weight of pigs produced (kg)	109.6	110.1	108.6
Finishing mortality (%)	5.9	5.8	5.2
Feed conversion ratio	2.5	2.2	2.0
Daily gain (g)	667	734	722
Days in herd	157	150	151

* Selected on feed conversion ratio

Source: Agrosoft Ltd

Table 5.14 Trends in performance and feed costs in the finishing herd

	2014	2015	2016	2017	2018
Herd structure					
Average number of pigs	1,733	1,828	1,554	1,769	1,757
Pig performance					
Average weight of pigs at start (kg)	35.0	37.2	36.3	38.1	38.4
Average weight of pigs produced (kg)	106.1	107.9	109.8	110.9	109.6
Finishing mortality (%)	3.2	2.7	3.0	2.8	3.2
Feed conversion ratio	2.7	2.7	2.7	2.9	2.8
Daily gain (g)	801	817	850	833	866
Feed usage and costs*					
Feed cost per tonne (£)	231.70	205.56	198.78	220.04	241.31

* Per tonne compound feed cost from AHDB

Source: Agrosoft Ltd

Table 5.15 Analysis of pigs born, weaned and re-service rate by parity, 2018

Parity	% of total	Born alive per litter	Born dead per litter	Total born incl. mummified	Weaned per litter	Weaned per sow per year
Gilt	24.2	12.3	0.5	12.9	11.5	25.9
2	21.2	12.7	0.5	13.3	11.5	25.9
3	17.0	13.4	0.6	14.1	11.5	26.3
4	13.0	13.5	0.8	14.4	11.4	26.1
5	11.2	13.3	0.9	14.3	11.1	25.2
6	7.2	12.9	0.9	13.9	10.7	24.0
7	3.3	12.6	0.9	13.6	10.5	23.1
8	1.6	12.1	1.0	13.2	10.0	21.1
9	0.8	11.5	0.9	12.5	9.6	20.4
10	0.3	11.3	0.9	12.4	9.9	21.2
11 < 15	0.3	10.5	1.0	11.6	9.9	20.8

Source: Agrosoft Ltd



Table 5.16 Analysis of total services and returns by parity, 2018

Parity	% of total	Farrowing rate %	Re-service rate %	Farrowing index	% share of dead and culled
Gilt	24.2	84.4	10.0	164.0	14.3
2	21.2	81.5	9.1	163.5	14.0
3	17.0	84.5	6.6	160.2	11.8
4	13.0	84.7	6.0	160.1	11.6
5	11.2	84.0	5.4	162.0	16.4
6	7.2	83.3	5.4	163.4	15.2
7	3.3	82.0	5.7	167.8	8.7
8	1.6	80.7	6.2	173.0	4.6
9	0.8	76.8	6.9	174.8	2.1
10	0.3	76.4	8.5	174.0	0.6
11 < 15	0.3	70.8	12.6	182.2	0.7

Source: Agrosoft Ltd

Chapter 6 – Pig carcass classification

Methods and probes

The EU has a number of methods of pig carcass classification for the prediction of lean meat percentage. Each method involves taking carcass measurements with EU-approved equipment at specified positions on each carcass.

The following equipment is approved for use in the UK:

- Optical Probe
- Hennessey Grading Probe (HGP)
- Fat-O-Meater (FOM)
- AutoFOM
- CSB Ultra-Meater

The HGP, FOM, AutoFOM and CSB Ultra-Meater are all automatic recording probes.

Method 1

Optical Probe is used to measure backfat and rind thickness at the P1 and P3 positions, level with the head of the last rib. The probe is inserted 4.5 cm and 8 cm from the dorsal midline, respectively. The sum of the P1 and P3 measurements is recorded.

Method 2

Optical probe is used to measure backfat and rind thickness at the P2 position, level with the head of the last rib. The probe is inserted 6.5 cm from the dorsal midline.

Method 3

HGP or FOM are used to measure:

- Backfat and rind thickness at the P2 position as for Method 2. The HGP or FOM probes are inserted 6 cm from the dorsal midline
- Backfat and rind thickness at a point 6 cm from the dorsal midline, between the third and fourth last rib. This measurement is referred to as rib fat
- Longissimus dorsi (eye muscle) depth at a point 6 cm from the dorsal midline between the third and fourth last rib. This measurement is referred to as rib muscle

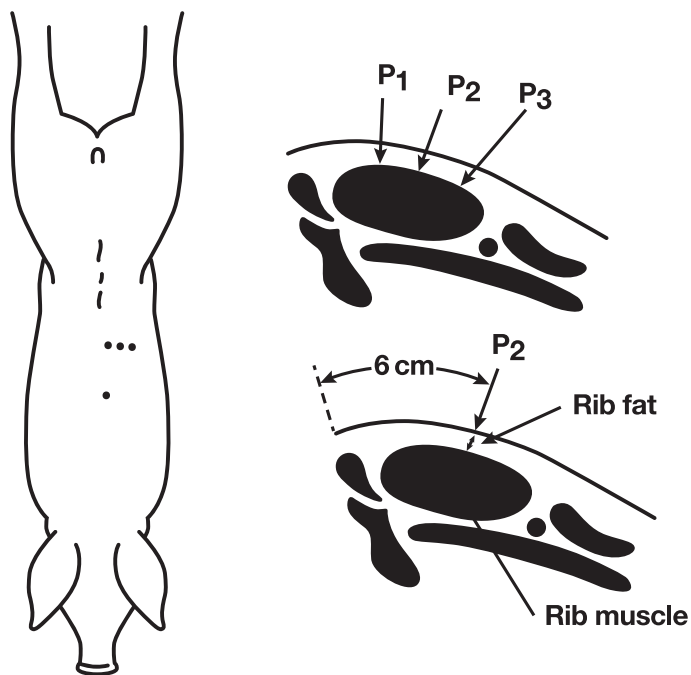


Figure 6.1 Location of probing sites on a pig carcass

Lean meat percentage and EU grade

Lean meat percentage is calculated as follows:

Optical probe

Cold carcass weight and P2 (or P1 + P3) fat depths are used to estimate lean meat percentage.

An EU grade can be allocated to a carcass by using the lean meat percentage figure.

Lean meat percentage	EU grade
60% and above	S
55–59%	E
50–54%	U
45–49%	R
40–44%	O
39% or less	P

Visual appraisal

This is the identification of pigs with carcass faults. These are described as 'Z' carcasses. Carcasses that are scraggy, deformed, blemished, pigmented and coarse skinned, those with soft fat or pale muscle, and those devalued by being partially condemned, are recorded as 'Z' on the carcass record (PCC1 or computer equivalent). Young boars are identified and recorded. Carcasses with poor conformation are recorded as 'C' carcasses at the request of the abattoir.

Dressing specification

Carcass dressing specifications provide a vital element of the carcass record.

AHDB bureau service

AHDB provides a help desk for the British pig sector. It offers advice and help on pig movements (eAML2), Pig Hub, the electronic medicine book (eMB-Pigs) and PigPro. Pig Hub simplifies the sign-on process, requiring only one username and password to access all of the services. The bureau is staffed by knowledgeable and friendly staff, who can support producers by providing assistance or signposting them if more specialist help is required.

eAML2

eAML2 – www.eaml2.org.uk

Opening hours: Monday to Friday 9:00am to 5:00pm

Contact details

Call: 0844 335 8400 (calls cost 5p per minute plus your phone provider's access charge)

Email: eaml2@ahdb.org.uk

eAML2 is the government website that records the movement of pigs in England and Wales. It is a mandatory government requirement for the purposes of disease control that all pig movements, i.e. moving farm to farm, to a market or collection centre, to slaughter and to shows, are pre-notified electronically, using the eAML2 website. Copies of the movement licences are automatically uploaded to Trading Standards. When moving pigs to slaughter, the eAML2 system includes the Food Chain Information form used by the Food Standards Agency (FSA).

The bureau team can advise keepers on setting up pig movements correctly or provide a telephone service for those producers without access to the internet. The bureau team will ask producers the necessary questions, and either post, email or fax licences ready to travel with the pigs. A paper copy must always accompany the pig haulier.

Scotland's pig keepers should register with www.scoteid.com

Pig Hub

Pig Hub – www.pighub.org.uk

Opening hours: Monday to Friday 9:00am to 5:00pm

Contact details

Call: 0844 335 8400 (calls cost 5p per minute plus your phone provider's access charge)

Email: pighub@ahdb.org.uk

Pig Hub is an AHDB website that allows producers and corporate pig businesses to access their holding details and set up information about how they run their business, such as vet practice, type of production system used, and special contacts allowed to access any of their data, such as staff and agents. It is also a portal used to access a variety of other services offered by AHDB, such as the electronic medicine book, PigPro, the disease charter and AHDB Pork website.

eMB-Pigs

Electronic Medicine Book – access via Pig Hub – www.pighub.org.uk

Opening Hours: Monday to Thursday 9:00am to 5:00pm and Friday 9:00am to 4:00pm

Contact details

Call: 0844 335 8400 (calls cost 5p per minute plus your phone provider's access charge)

Email: pighub@ahdb.org.uk

The electronic medicine book for pigs (eMB-Pigs) is a website for all UK pig producers, enabling the industry to record accurate on-farm antibiotic usage data.

eMB-Pigs provides an electronic version of the existing paper medicine book and is a convenient way to record and quantify usage so producers can review and optimise their antibiotic use.

Red Tractor farm assurance requires that aggregated records of antibiotic use are kept and uploaded on a quarterly basis. This includes antibiotics administered in feed. eMB-Pigs helps producers collate this information.

Within eMB, a benchmarking function enables similar types of producers to compare their on-farm antibiotic usage, allowing them to review their approach with their vet.

This ensures antibiotics are used responsibly on farm; that the health and welfare of the pigs is optimised and productivity enhanced.

Entering data is quick and easy and can be done in bulk using a spreadsheet or via the online forms. The bureau team is experienced in assisting with data entry and answering any questions.

The eMB also provides an anonymised, aggregated national record of total antibiotic usage for the Veterinary Medicines Directorate (VMD), as required for reporting into EU. AHDB commissioned the website so all pig antibiotic usage data is in one place and a total industry usage can be established. By using eMB, AHDB was able to calculate that the UK pig sector reduced its antibiotic use by 28% in 2017, meaning it has now halved its use in two years and is on track to reach 99 mg/PCU by 2020.

PigPro

PigPro – access via Pig Hub – www.pighub.org.uk

or directly – www.pigpro.ahdb.org.uk

Opening hours: Monday to Thursday 9:00am to 5:00pm and Friday 9:00am to 4:00pm

Contact details

Call: 0844 335 8400 (calls cost 5p per minute plus your phone provider’s access charge)

Email: pigpro@ahdb.org.uk

PigPro is an online training recording system accessed through Pig Hub. It allows businesses to record staff training and professional development. It can be used to provide evidence for producers that their staff have had the necessary training (such as First Aid, Animal Welfare and Stockman Development Scheme) for compliance with welfare standards and assurance schemes.

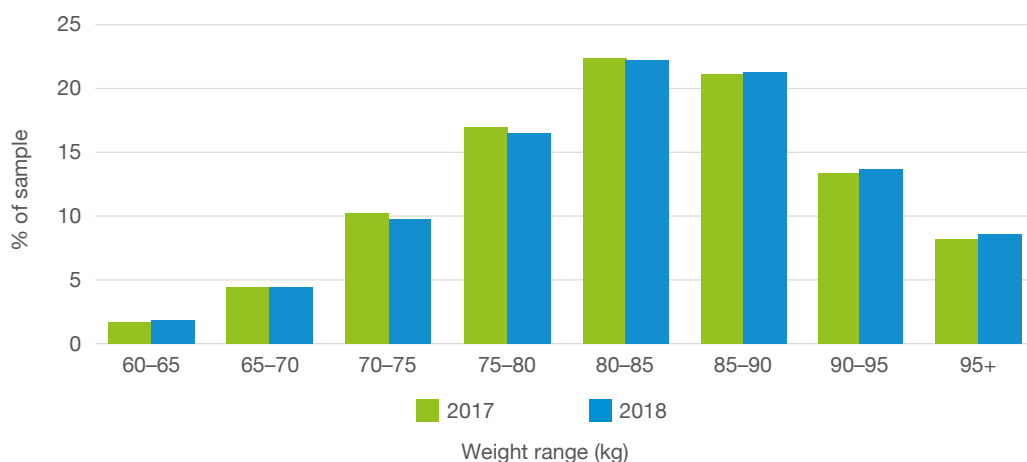


Figure 6.2 Distribution of the GB All Pig Price sample by carcass weight

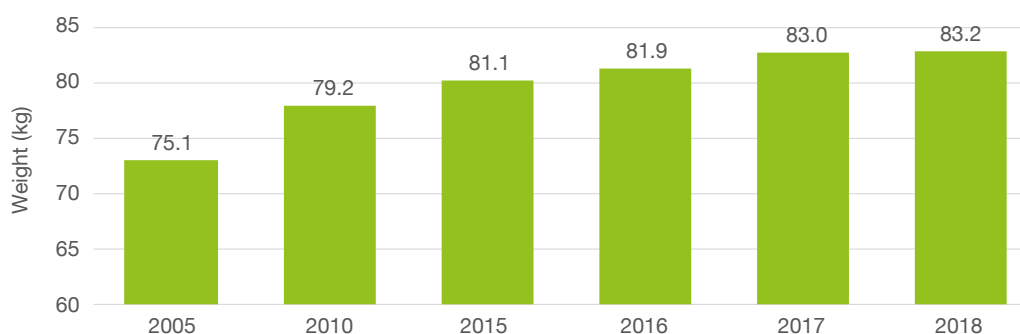


Figure 6.3 Average carcass weights of the GB All Pig Price sample

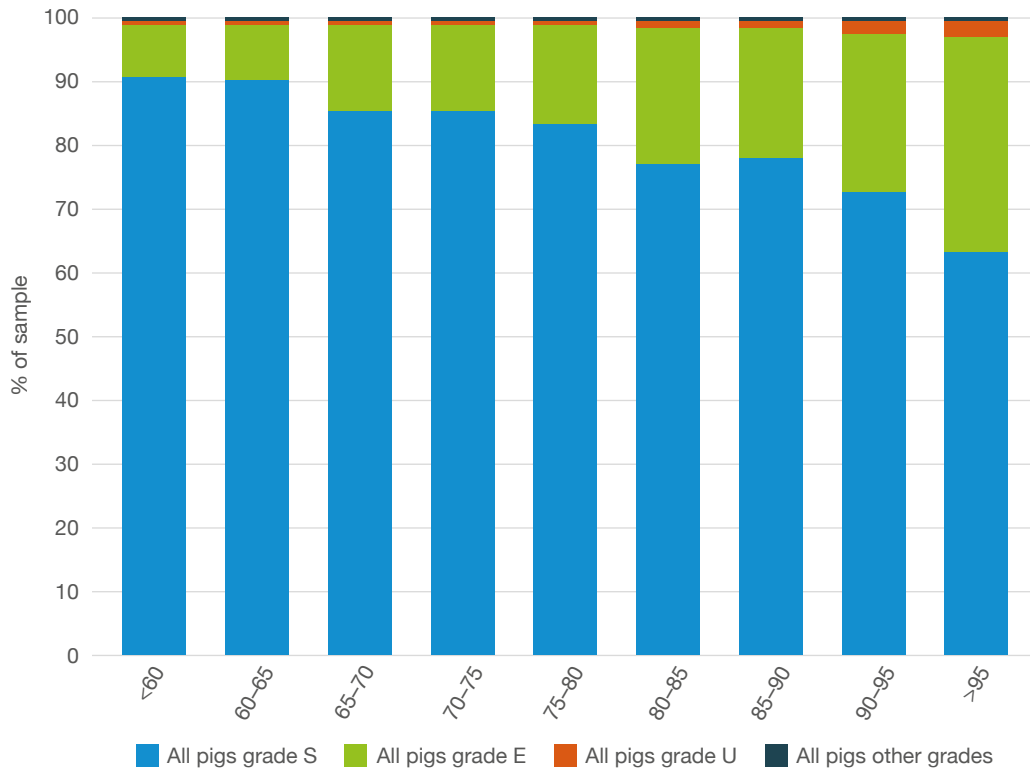


Figure 6.4 Distribution of the GB All Pig Price sample in EC grade by weight band, 2018

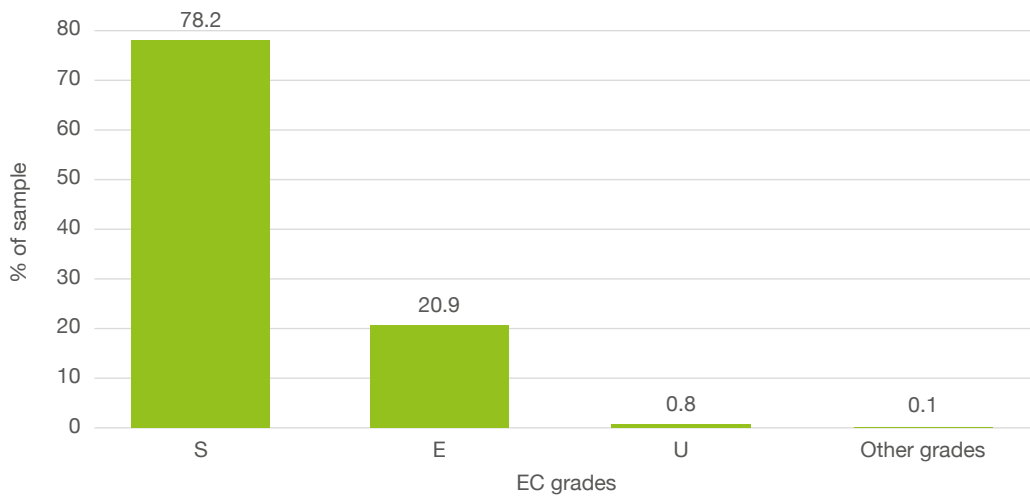


Figure 6.5 Distribution of the GB All Pig Price sample by EC grade, 2018

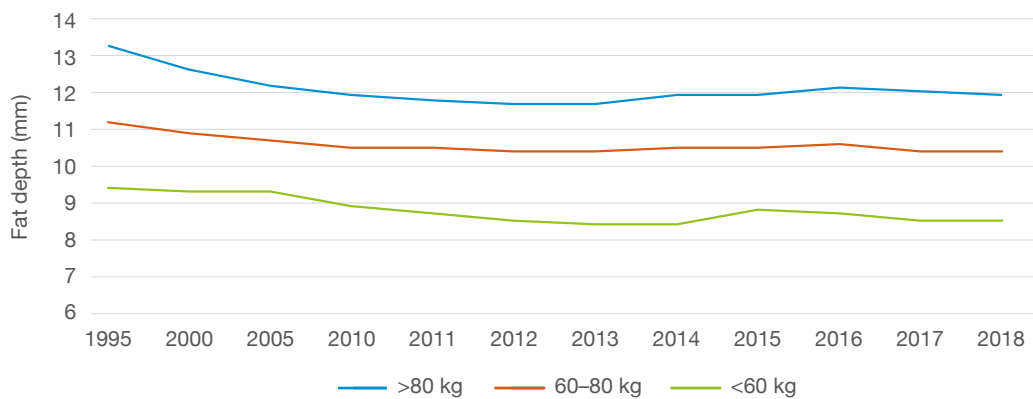


Figure 6.6 Trends in P2 fat depth of the GB All Pig Price sample

Chapter 7 – Livestock and meat prices

Table 7.1 GB deadweight pig prices

	GB SPP* (EU Specification)				GB APP** (EU Specification)			
	2016	2017	2018	2017–18	2016	2017	2018	2017–18
	p/kg dw			% change	p/kg dw			% change
January	117.37	150.66	147.88	-1.8	121.59	153.85	150.96	-1.9
February	112.70	149.75	145.83	-2.6	116.66	153.19	148.90	-2.8
March	112.33	151.53	145.56	-3.9	115.98	154.61	148.54	-3.9
April	113.19	156.11	145.55	-6.8	116.83	159.03	148.62	-6.5
May	116.01	159.64	148.17	-7.2	119.46	163.23	151.02	-7.5
June	120.88	162.08	149.94	-7.5	124.35	165.60	152.82	-7.7
July	128.05	164.36	150.27	-8.6	130.67	167.90	153.01	-8.9
August	135.57	164.28	148.84	-9.4	137.85	167.82	152.20	-9.3
September	139.91	161.65	147.68	-8.6	141.93	165.23	151.18	-8.5
October	144.84	156.95	145.59	-7.2	147.26	160.00	149.09	-6.8
November	149.92	153.25	143.57	-6.3	152.08	156.30	147.91	-5.4
December	151.70	150.76	141.91	-5.9	154.54	154.17	146.48	-5.0

* The GB SPP is the Standard Pig Price produced by AHDB

** The GB APP is the All Pig Price produced by AHDB

Table 7.2 GB weaner prices

	30 kg weaners				7 kg weaners			
	2016	2017	2018	2017–18	2016	2017	2018	2017–18
	p/kg dw			% change	p/kg dw			% change
January	37.60	55.15	52.66	-4.5	30.38	38.66	37.55	-2.9
February	36.62	55.73	51.13	-8.3	29.13	38.49	36.86	-4.2
March	36.73	56.65	50.39	-11.1	28.50	39.02	37.68	-3.4
April	37.44	58.21	51.49	-11.5	28.85	40.50	36.87	-9.0
May	38.56	59.90	50.10	-16.4	29.18	42.90	37.59	-12.4
June	40.14	60.06	54.31	-9.6	30.06	44.04	37.91	-13.9
July	42.71	60.52	54.76	-9.5	31.20	44.26	39.34	-11.1
August	45.96	60.08	53.30	-11.3	33.11	44.55	37.71	-15.4
September	47.40	59.07	52.85	-10.5	34.89	43.77	36.14	-17.4
October	49.65	56.94	48.72	-14.4	36.62	42.54	36.65	-13.8
November	53.93	55.52	47.06	-15.2	37.37	41.13	36.83	-10.5
December	54.60	52.69	45.31	-14.0	38.53	40.40	35.33	-12.5

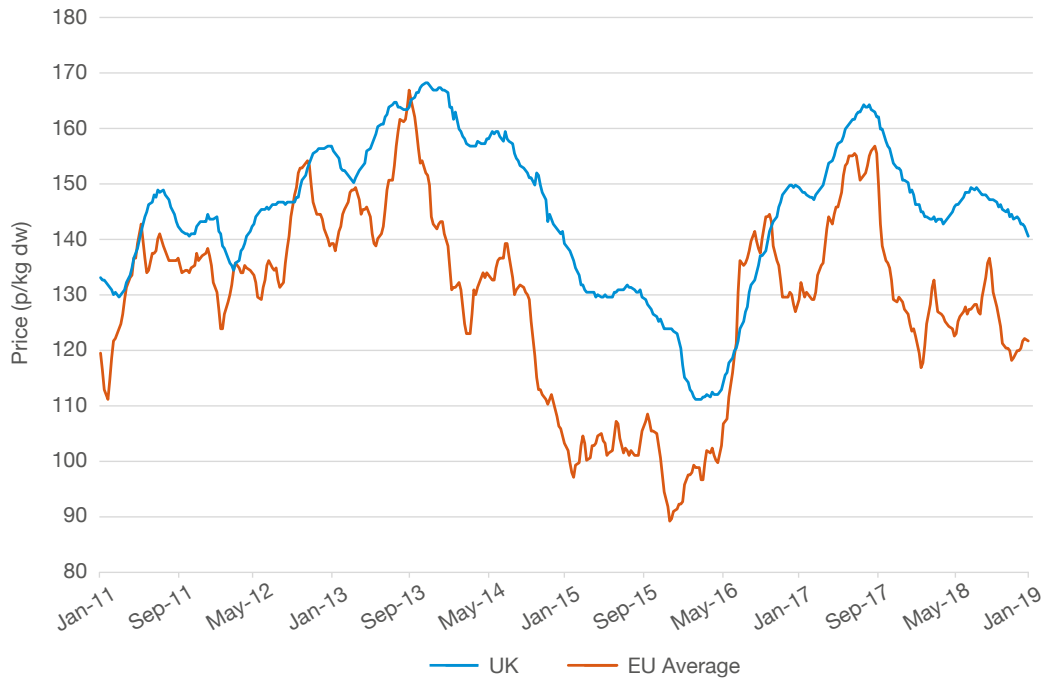


Figure 7.1 UK and EU pig meat reference prices

Source: EU Commission



Figure 7.2 Global export prices for fresh/frozen pork

Global export price is the average price of fresh/frozen pork exported from the four major global exporters – EU, United States, Canada and Brazil

Source: IHS Maritime & Trade – Global Trade Atlas®

Chapter 8 – Imports and exports

Table 8.1 Volume of total UK pig meat imports

Tonnes, product weight	2014	2015	2016	2017	2018
Fresh/frozen meat	358,138	371,746	439,918	467,000	456,653
Bacon/ham	256,155	251,050	242,713	220,093	214,802
Sausages	109,287	122,682	123,129	135,475	142,169
Processed hams, shoulders and pieces*	138,979	140,125	149,210	157,066	158,456
Total	862,559	885,603	954,970	979,634	972,080
Live pigs (head)	212,961	820,917	577,930	507,823	564,194

* Including canned

Data as at February 2019

Source: IHS Maritime & Trade – Global Trade Atlas®/HMRC

Table 8.2 Value of total UK pig meat imports

£'000	2014	2015	2016	2017	2018
Fresh/frozen meat	699,406	613,125	778,199	943,948	851,251
Bacon/ham	601,343	536,356	552,258	561,080	543,924
Sausages	352,876	360,467	395,920	468,873	472,024
Processed hams, shoulders and pieces*	489,614	446,230	495,771	568,597	551,076
Total	2,143,239	1,956,179	2,222,148	2,542,499	2,418,275
Live pigs (head)	18,426	77,460	56,466	61,112	56,783

* Including canned

Data as at February 2019

Source: IHS Maritime & Trade – Global Trade Atlas®/HMRC



Table 8.3 UK fresh/frozen pork imports by source

Tonnes, product weight	2014	2015	2016	2017	2018
Total	358,138	371,746	439,918	467,000	456,653
Denmark	89,680	97,858	169,668	163,589	152,497
Germany	74,579	67,706	68,488	88,513	95,281
Netherlands	55,774	55,953	49,505	55,409	47,273
Ireland	31,963	32,528	32,478	40,328	42,499
Spain	27,089	33,532	37,726	40,876	38,881
Belgium	35,502	36,673	33,775	32,232	35,672
France	31,879	27,280	25,158	22,058	20,416
Poland	4,493	11,292	14,297	13,390	15,730
Italy	2,567	3,390	2,606	4,236	2,563
Portugal	2,771	2,688	2,673	2,475	1,651
Austria	4	65	535	1,558	1,549
United States	856	909	954	935	841

Data as at February 2019

Source: IHS Maritime & Trade – Global Trade Atlas®/HMRC

Table 8.4 UK bacon imports by source

Tonnes, product weight	2014	2015	2016	2017	2018
Total	256,155	251,050	242,713	220,093	214,802
Netherlands	88,093	88,613	92,429	103,161	102,351
Denmark	115,150	95,327	92,472	58,198	55,194
Germany	35,640	47,238	37,665	37,766	34,436

Data as at February 2019

Source: IHS Maritime & Trade – Global Trade Atlas®/HMRC

Table 8.5 Volume of total UK pig meat exports

Tonnes, product weight	2014	2015	2016	2017	2018
Fresh/frozen meat	181,713	187,080	206,098	215,986	217,690
Bacon/ham	13,909	15,921	16,419	19,302	21,417
Sausages	10,612	9,371	6,265	6,378	7,771
Processed hams, shoulders and pieces*	13,802	13,141	12,708	11,525	11,229
Pig offal	45,084	58,929	77,031	81,476	88,442
Total	265,120	284,442	318,521	334,667	346,549
Live pigs (head)	1,295	126	589	2,277	2,774

* Including canned

Data as at February 2019

Source: IHS Maritime & Trade – Global Trade Atlas®/HMRC

Table 8.6 Value of total UK pig meat exports

£'000	2014	2015	2016	2017	2018
Fresh/frozen meat	209,178	197,405	252,278	293,650	291,742
Bacon/ham	38,256	38,132	41,332	53,599	61,876
Sausages	18,269	16,158	15,350	18,242	29,970
Processed hams, shoulders and pieces*	34,241	31,117	25,328	25,186	27,038
Pig offal	35,048	38,464	64,365	79,717	79,086
Total	334,991	321,276	398,653	470,394	489,712
Live pigs (head)	1,481	82	352	67	194

* Including canned

Data as at February 2019

Source: IHS Maritime & Trade – Global Trade Atlas®/HMRC

Table 8.7 Volume of UK fresh/frozen pork exports by destination

Tonnes, product weight	2014	2015	2016	2017	2018
Total	181,713	187,080	206,098	215,986	217,690
(EU-28)	127,490	130,122	131,181	138,986	137,242
Ireland	27,950	31,032	33,587	31,093	34,123
Germany	30,977	31,820	32,632	32,695	33,568
Denmark	23,702	23,604	22,130	30,004	25,048
Netherlands	19,648	18,083	17,486	16,369	17,475
Sweden	7,342	10,025	9,605	9,114	8,477
Belgium	7,213	5,747	5,672	7,481	6,905
China	24,669	27,250	40,016	40,354	40,718
United States	3,267	5,998	8,177	7,711	11,026
Hong Kong	14,634	11,123	10,837	11,862	7,892

Data as at February 2019

Source: IHS Maritime & Trade – Global Trade Atlas®/HMRC



Table 8.8 Value of UK fresh/frozen pork exports by destination

£'000	2014	2015	2016	2017	2018
Total	209,178	197,405	252,278	293,650	291,742
(EU-28)	157,366	138,118	160,174	196,200	185,946
Ireland	65,509	60,875	71,856	83,793	88,399
Germany	35,872	27,112	32,197	38,260	34,033
Denmark	24,864	22,378	25,000	33,955	26,106
Netherlands	16,319	9,512	10,386	11,441	10,715
Belgium	4,219	2,846	3,443	6,893	5,125
Sweden	2,529	4,259	4,815	6,648	4,797
China	19,619	25,027	43,344	43,115	43,644
United States	10,289	17,699	23,047	23,668	33,423
Hong Kong	11,980	7,632	10,248	12,706	6,940

Data as at February 2019

Source: IHS Maritime & Trade – Global Trade Atlas®/HMRC

Table 8.9 Volume of UK pig offal exports by destination

Tonnes, product weight	2014	2015	2016	2017	2018
Total	45,084	58,929	77,031	81,476	88,442
(EU-28)	11,131	13,294	15,951	18,507	18,932
Netherlands	5,097	6,233	8,335	7,698	9,234
Denmark	2,360	3,398	3,331	5,196	5,345
Ireland	2,644	1,891	2,216	2,365	1,612
Germany	399	312	519	1,041	1,315
China	17,202	27,287	36,071	32,330	40,764
Hong Kong	11,980	10,957	15,198	17,089	13,169
Philippines	1,288	2,005	4,239	6,525	6,836
Cote d'Ivoire	401	1,093	883	1,998	3,642
Vietnam	-	542	368	352	1,945

Data as at February 2019

Source: IHS Maritime & Trade – Global Trade Atlas®/HMRC

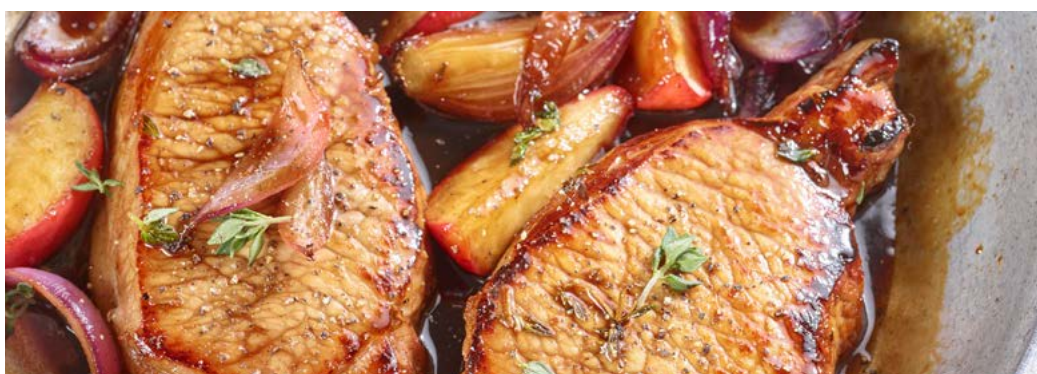


Table 8.10 Value of UK pig offal exports by destination

£'000	2014	2015	2016	2017	2018
Total	35,048	38,464	64,365	79,717	79,086
(EU-28)	5,502	5,213	6,958	12,176	11,422
Netherlands	1,598	1,350	3,046	4,935	5,005
Denmark	1,066	1,245	1,306	2,948	2,965
Ireland	2,186	1,737	1,477	1,841	1,515
Germany	121	100	30	1025	734
China	11,654	17,937	31,385	25,948	33,784
Hong Kong	14,612	11,157	18,497	28,290	19,896
Philippines	981	1,073	3,121	5,985	6,109
Vietnam	-	512	595	574	2,297
Cote d'Ivoire	178	419	370	986	1,625

Data as at February 2019

Source: IHS Maritime & Trade – Global Trade Atlas®/HMRC

Table 8.11 EU fresh/frozen pig meat exports to non-EU countries

'000 tonnes, product weight	2014	2015	2016	2017	2018
Live animals	43.5	24.9	10.5	14.8	19.4
Fresh/frozen pork	1,360.0	1,523.4	2,139.0	1,976.4	2,054.7
Salted, dried, smoked pig meat	32.1	33.0	34.4	38.5	41.5
Pig offal	1,081.8	1,177.7	1,393.6	1,308.0	1,223.7
Sausages	121.4	110.5	95.2	101.5	97.3
Prepared and reserved	71.7	65.6	66.3	65.8	73.1
Pig fat	14.5	13.1	13.8	14.6	13.7
Lard	211.5	214	249.7	201.2	212.7
Total	2,936.5	3,162.2	4,002.5	3,720.8	3,736.0

Source: European Commission



Table 8.12 EU fresh/frozen pork exports by destination

Tonnes, product weight	2014	2015	2016	2017	2018
Total	1,564,918	1,742,764	2,311,905	2,094,547	2,139,973
China	290,983	531,443	986,545	711,364	668,808
Japan	317,373	292,736	318,340	331,350	345,380
South Korea	194,956	188,924	219,662	220,996	276,090
United States	66,347	71,663	82,357	107,191	119,590
Philippines	79,961	74,806	90,023	106,172	118,823
Hong Kong	141,272	98,098	138,479	148,063	78,920
Australia	73,279	83,704	81,580	68,508	75,196
Taiwan	26,111	40,668	40,199	49,946	40,467
Serbia	19,472	20,383	22,127	26,865	29,887
Singapore	27,318	27,672	25,725	25,611	28,385
New Zealand	19,520	25,575	30,106	26,015	27,258
South Africa	17,129	24,286	21,799	23,079	26,941
Ukraine	14,580	6,004	2,872	4,914	25,507
Cote d'Ivoire	15,919	20,824	22,197	27,419	25,273

Totals are higher than those of the EU Commission, reported in Table 8.11 as the latter exclude meat from non-domestic swine
Data as at February 2019

Source: IHS Maritime & Trade – Global Trade Atlas®/HMRC

What does this mean for the industry?

Helping our levy payers make sense of the issues as they evolve.

Helping key stakeholders and Government to seek the best possible deal for our industries outside the EU.



ahdb.org.uk/brexit

Table 8.13 EU pig offal exports by destination

Tonnes, product weight	2014	2015	2016	2017	2018
Total	1,085,304	1,177,275	1,392,949	1,306,658	1,222,792
China	470,983	614,607	823,220	693,495	691,716
Hong Kong	281,870	203,778	238,515	239,209	148,457
Philippines	82,129	78,148	86,040	91,709	98,862
Vietnam	9,859	25,181	34,782	29,034	54,890
South Korea	31,857	37,049	29,806	42,075	40,952
Cote d'Ivoire	26,539	32,271	20,724	23,273	33,089
Thailand	27,147	27,749	27,978	26,162	23,378
Ukraine	22,438	28,313	22,474	21,983	19,479
Japan	12,234	17,790	25,674	35,956	13,931
Congo	8,056	10,316	8,739	11,904	12,044
Democratic Republic of Congo	14,444	14,892	8,298	6,775	8,406
South Africa	6,322	7,262	5,910	8,125	8,054
Singapore	7,579	8,047	9,289	6,918	7,706
Angola	10,758	8,201	3,472	4,758	7,326

Totals are slightly different from those of the EU Commission possibly due to a different approach to amendments

Data as at February 2019

Source: IHS Maritime & Trade – Global Trade Atlas®/HMRC

Chapter 9 – Consumption

Table 9.1 UK per capita consumption of major meats

kg/person/year	Pig meat	Poultry meat	Beef and veal	Total meat
2008	24.5	29.5	20.0	80.0
2009	24.3	29.9	18.2	77.9
2010	24.1	31.8	18.6	79.4
2011	24.6	32.7	18.1	80.0
2012	24.6	32.8	18.0	79.7
2013	23.9	32.8	17.3	78.6
2014	24.4	33.0	17.8	79.8
2015	25.1	36.1	18.2	84.3
2016	26.1	37.7	18.2	86.8
2017	26.0	36.3	18.3	85.1
2018	26.0	36.8	18.5	85.7

Per capita consumption is a calculation based upon total supplies available for consumption, i.e. production + imports - exports divided by the mid-year population estimate

All data has been converted to carcass weight equivalent

Source: AHDB. Calculations based on data from Defra, IHS Maritime & Trade – Global Trade Atlas®/HMRC, Office for National Statistics

Table 9.2 GB retail value sales by type of outlet

%	Multiples	Freezer centres	Butchers	Other
Pork				
2016	82.9	3.2	8.4	5.5
2017	82.4	3.1	8.5	6.0
2018	84.0	2.8	7.9	5.3
Bacon				
2016	84.7	5.1	3.3	6.9
2017	85.6	4.8	3.0	6.6
2018	85.7	4.9	3.0	6.4

Data covers 52 weeks ending in late December the same year/early January of the next year

Source: Kantar Worldpanel

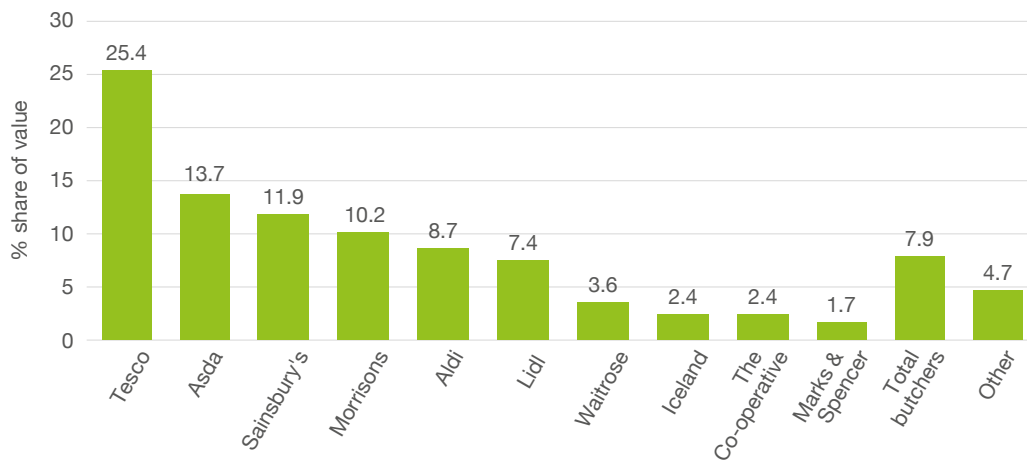


Figure 9.1 GB retailer shares of pork market by value, 2018

Data covers 52 weeks ending 30 December 2018

Source: Kantar Worldpanel

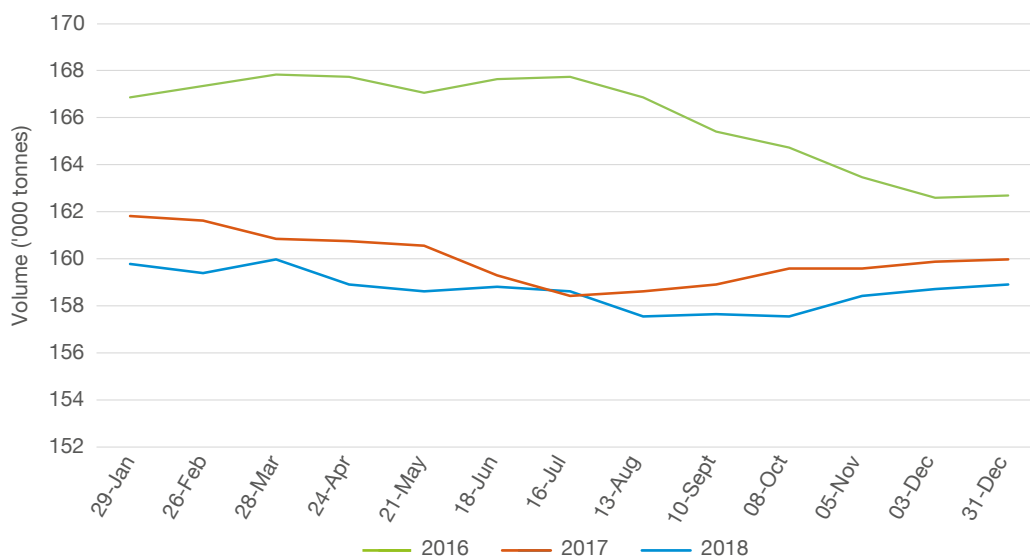


Figure 9.2 Trends in GB household pork purchases by volume

Source: Kantar Worldpanel

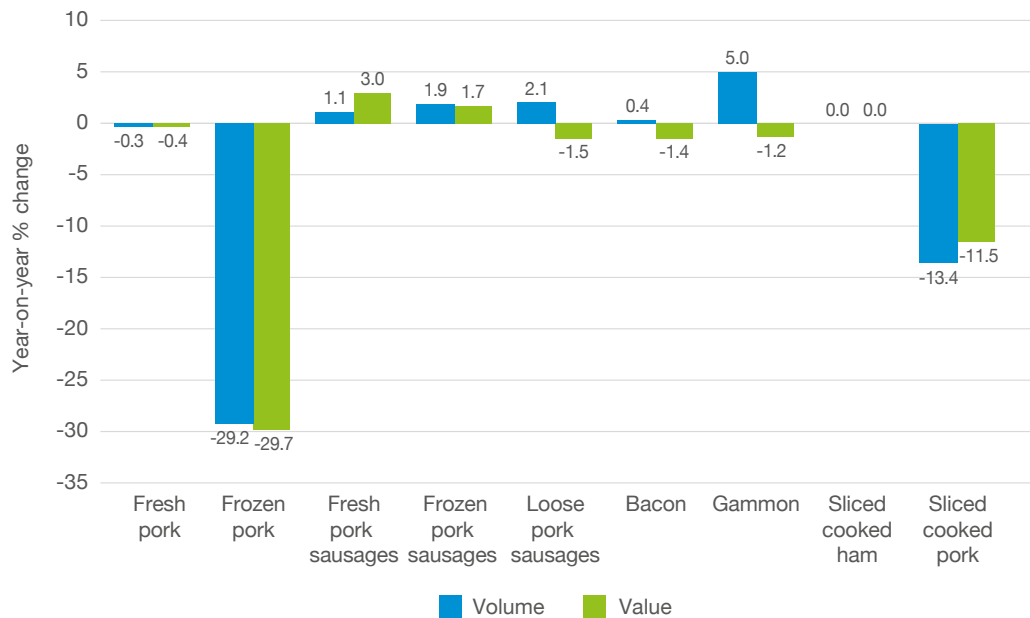


Figure 9.3 Change in GB retail volume and value sales of pig meat products, 2018
 Data covers 52 weeks ending in late December the same year/early January of the next year
 Source: Kantar Worldpanel

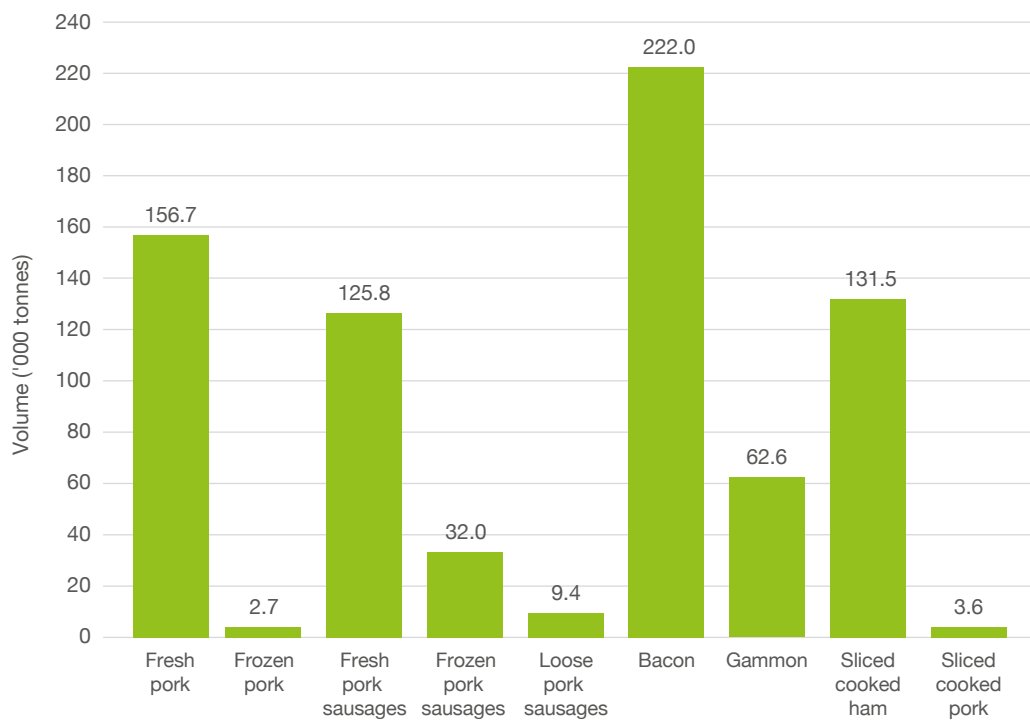


Figure 9.4 Volume sales of pig meat by product, 2018
 Data covers 52 weeks ending 30 December 2018
 Source: Kantar Worldpanel

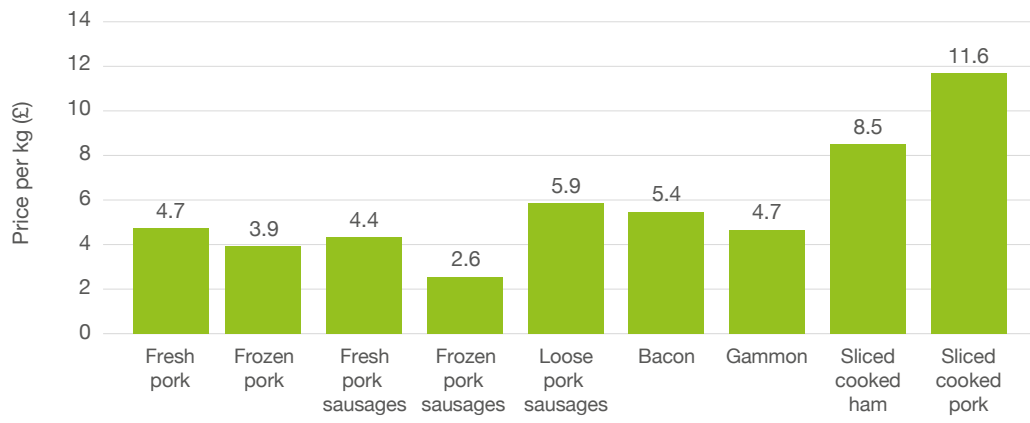


Figure 9.5 Average GB retail price of pig meat products, 2018

Data covers 52 weeks ending 30 December 2018

Source: Kantar Worldpanel





This publication and its content is produced by the AHDB Market Intelligence team whose systems are certified to ISO 9001:2015

All other trademarks, logos and brand names contained in this publication are the trademarks of their respective holders. No rights are granted without the prior written permission of the relevant owners.

All data is sourced to AHDB unless stated otherwise.

Produced for you by:

AHDB

Stoneleigh Park

Kenilworth

Warwickshire

CV8 2TL

T 024 7669 2051

E comms@ahdb.org.uk

W ahdb.org.uk

@AHDB_Pork

If you no longer wish to receive this information, please email us on comms@ahdb.org.uk

While the Agriculture and Horticulture Development Board seeks to ensure that the information contained within this document is accurate at the time of printing, no warranty is given in respect thereof and, to the maximum extent permitted by law, the Agriculture and Horticulture Development Board accepts no liability for loss, damage or injury howsoever caused (including that caused by negligence) or suffered directly or indirectly in relation to information and opinions contained in or omitted from this document.

© Agriculture and Horticulture Development Board 2019. All rights reserved.

Further publication of the trade data is prohibited, unless expressly permitted by IHS Maritime & Trade.

AHDB